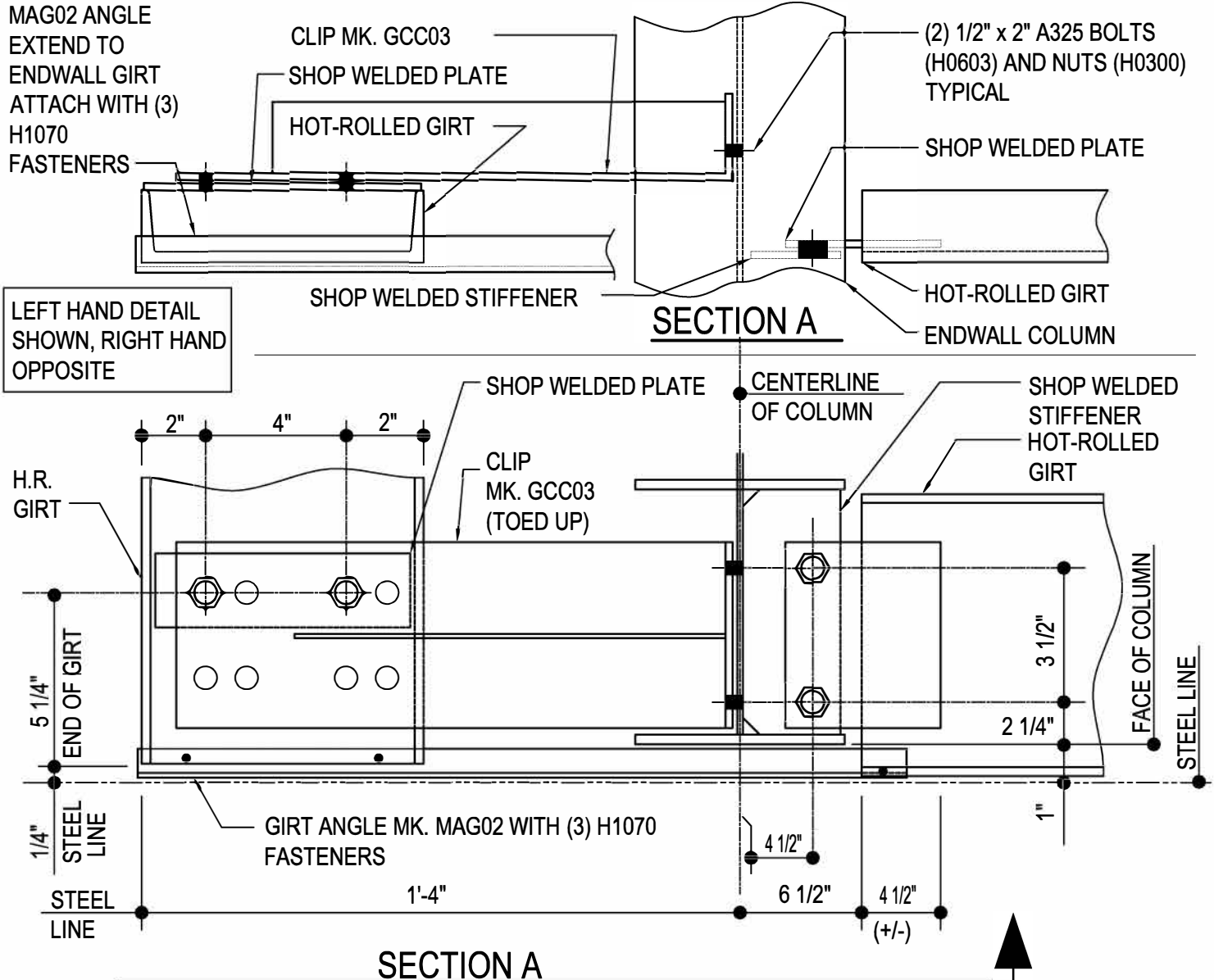


## **INSET GIRT DETAILS**

- CE0015 - INSET CORNER 8" H.R. GIRT DETAIL
  - CE0110 - INSET CORNER COLUMN GIRT DETAIL
  - CE0241 - INSET CORNER GIRT DETAIL
  - CE1010 - INSET CORNER WELDED GIRT DETAIL
  - CE1030 - INSET TO INSET CORNER DETAIL
-

CE0015 - INSET CORNER 8" H.R. GIRT DETAIL

[Download the DWG file by clicking here.](#)



## HOT-ROLLED GIRT CORNER DETAIL

8" HOT-ROLLED GIRT AT INSET CORNER.

NOTE: USE (6) 1/2" x 2" A325 BOLTS (MK. H0603) & NUTS (MK. H0300)  
REFERENCE ERECTOR NOTE FOR TYPICAL WASHER REQUIREMENTS

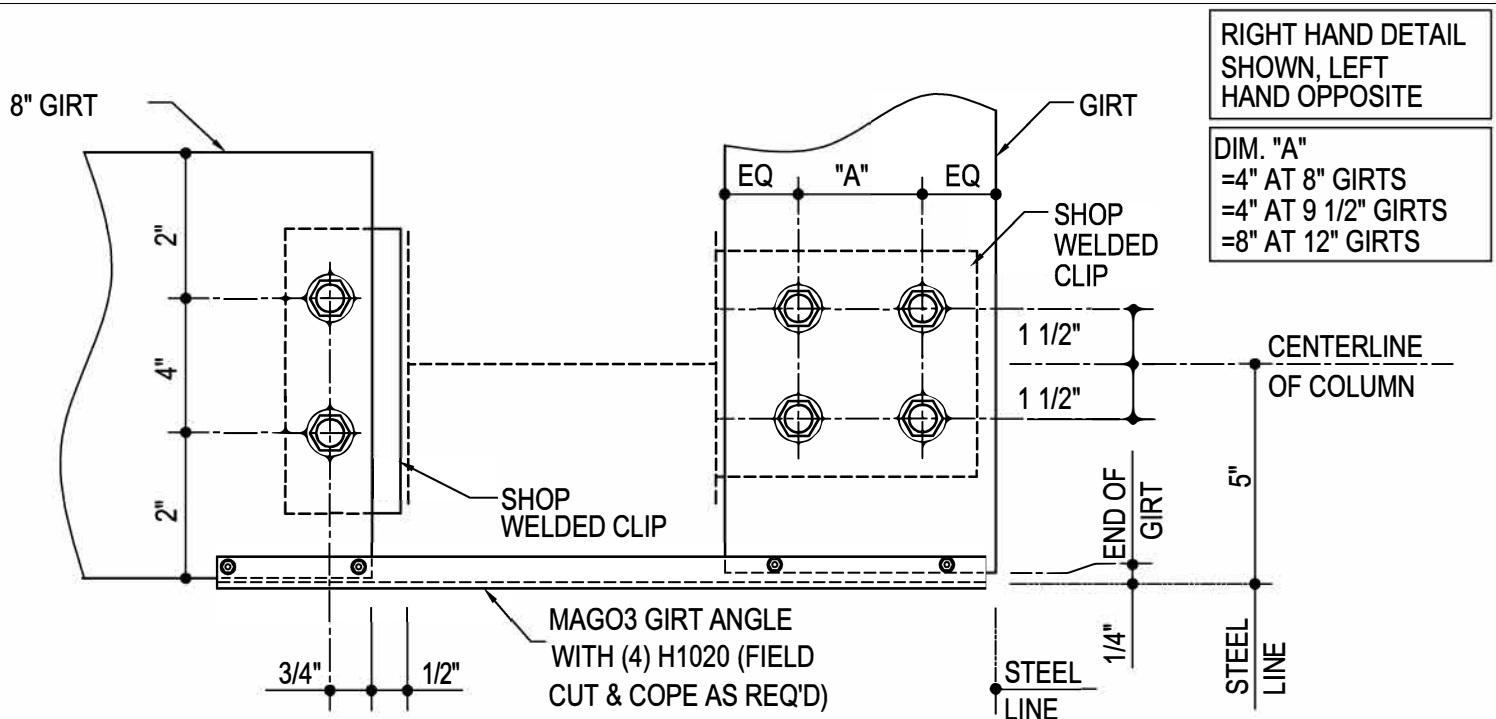
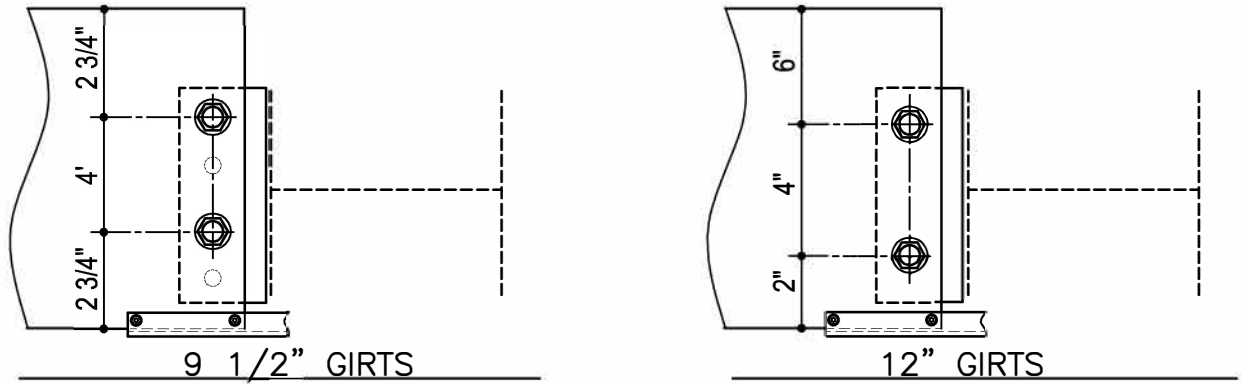
**CE0015**

Detailer Notes:

- 1) DETAIL FOR HOT ROLLED & BUILT-UP COLUMN ONLY
- 2) CLIP TO HR GIRT & STIFFENER: GCP06
- 3) STIFFENER TO COLUMN: STFBR
- 4) CLIP TO HR GIRT: HCS08

CE0110 - INSET CORNER COLUMN GIRT DETAIL

[Download the DWG file by clicking here.](#)



## INSET CORNER COLUMN GIRT DETAIL

NOTE: USE (6) 1/2" x 1 1/4" A307 BOLTS H0500/NUTS H0400  
REFERENCE STANDARD WASHER DETAIL FOR TYPICAL  
WASHER REQUIREMENTS

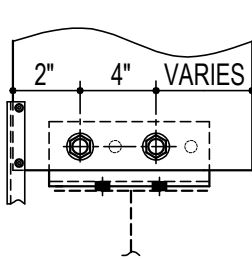
**CE0110**

Detailer Notes:

- |   |   |
|---|---|
| <p>1) (4) HOLE WELDED CLIP:<br/>8" - PCU01<br/>9 1/2" - GCB62<br/>12" - GCB12</p> | <p>2) (2) HOLE WELDED CLIP:<br/>8" - GRC09<br/>9 1/2" - GRC03<br/>12" - GRC09</p> |
|---|---|

CE0241 - INSET CORNER GIRT DETAIL

[Download the DWG file by clicking here.](#)



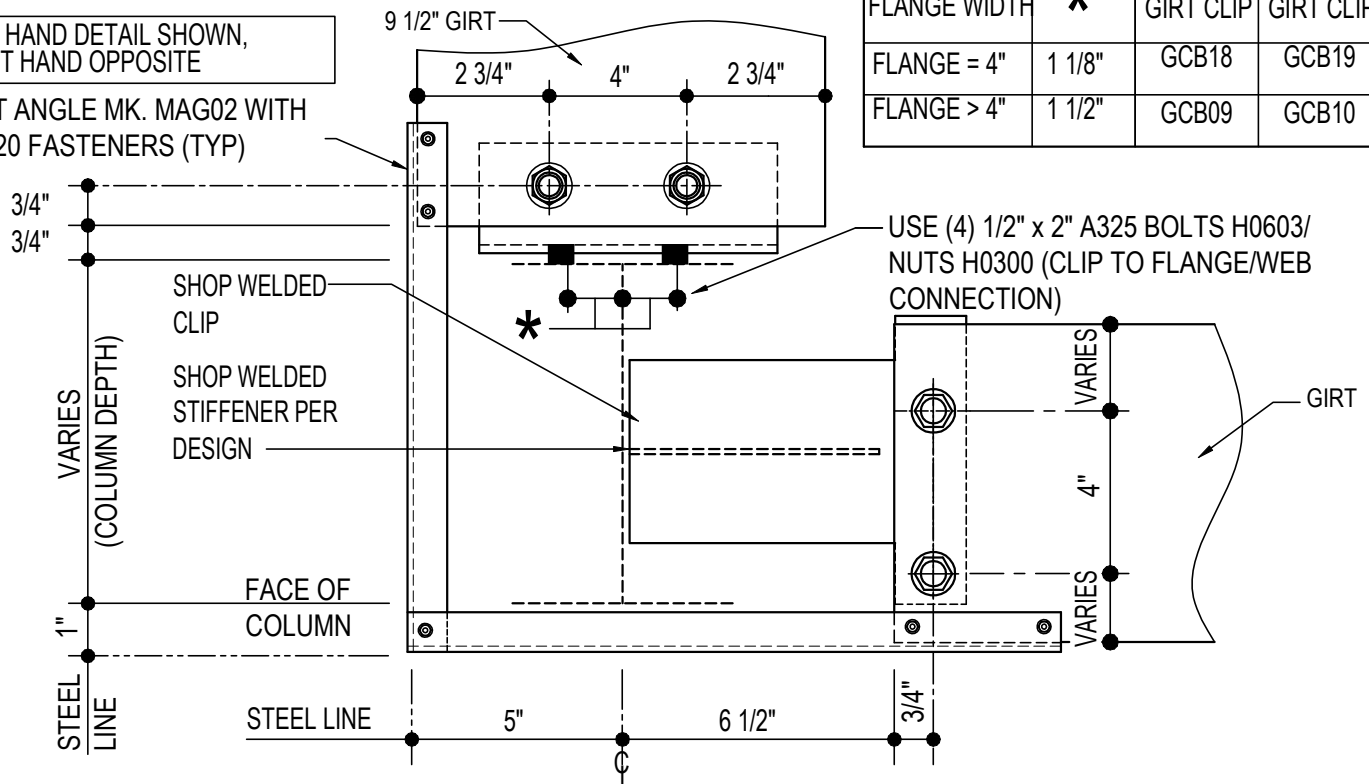
**8" & 12" GIRTS**

**GCB CLIP BOLT PLACEMENT**

COLUMN FLANGE WIDTH	*	8"/12" GIRT CLIP	9 1/2" GIRT CLIP
FLANGE = 4"	1 1/8"	GCB18	GCB19
FLANGE > 4"	1 1/2"	GCB09	GCB10

LEFT HAND DETAIL SHOWN,  
RIGHT HAND OPPOSITE

(2) GIRT ANGLE MK. MAG02 WITH  
(5) H1020 FASTENERS (TYP)



## INSET CORNER GIRT DETAIL

NOTE: USE (4) 1/2" x 1 1/4" A307 BOLTS H0500/  
NUTS H0400. REFERENCE STANDARD WASHER DETAIL FOR TYPICAL  
WASHER REQUIREMENTS

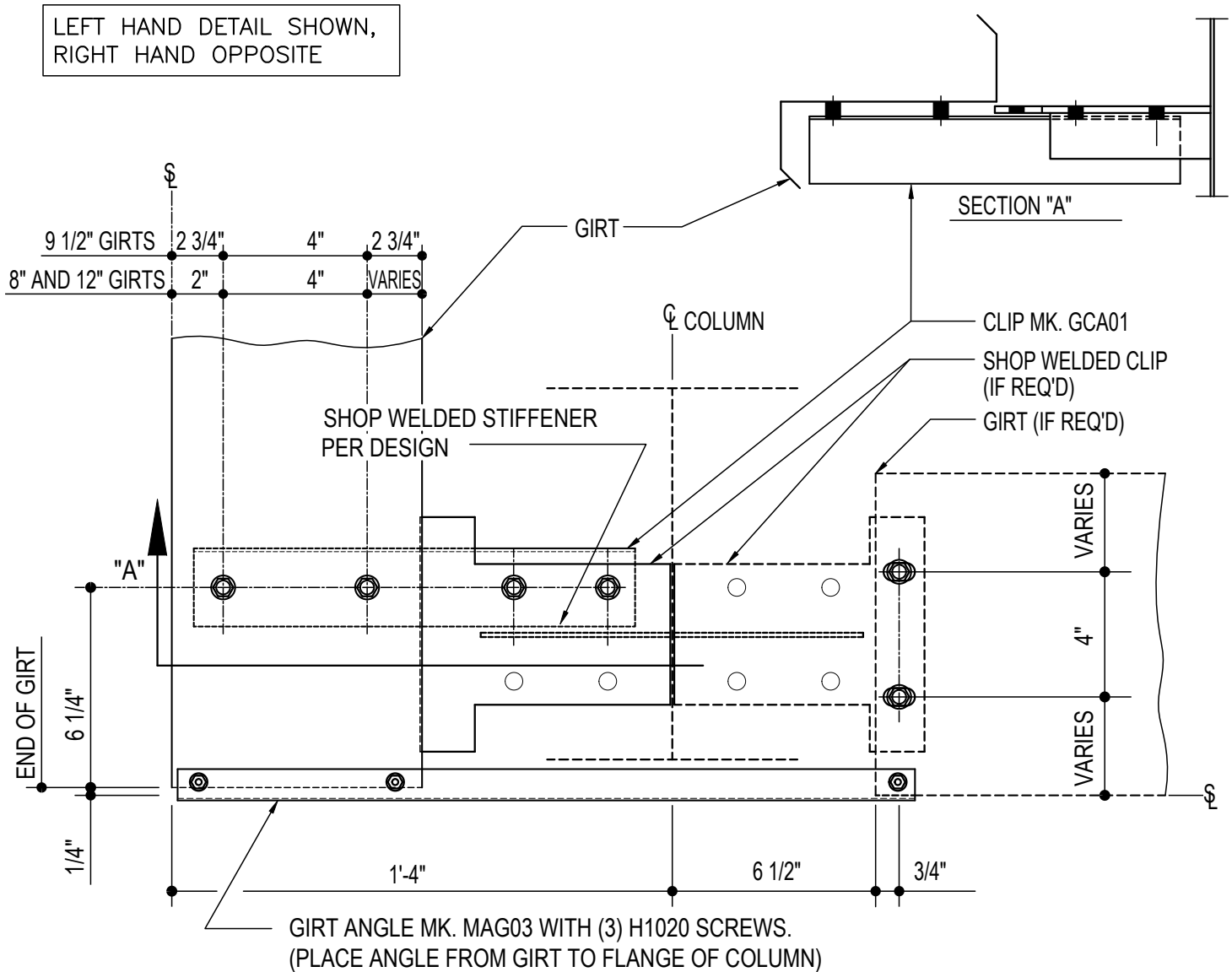
**CE0241**

**Detailer Notes:**

- 1) WELDED CLIP TO COLUMN: GFI02
- 2) ADD STIFFENER PER DESIGN: WS\_04

CE1010 - INSET CORNER WELDED GIRT DETAIL

[Download the DWG file by clicking here.](#)



## CORNER GIRT DETAIL

CORNER INSET GIRT DETAIL WITH WELDED CLIPS

NOTE: USE (6) 1/2" X 1 1/4" A307 BOLTS H0500/NUTS H0400

REFERENCE WASHER DETAIL FOR TYPICAL WASHER REQUIREMENTS

CE1010

Detailer Notes:

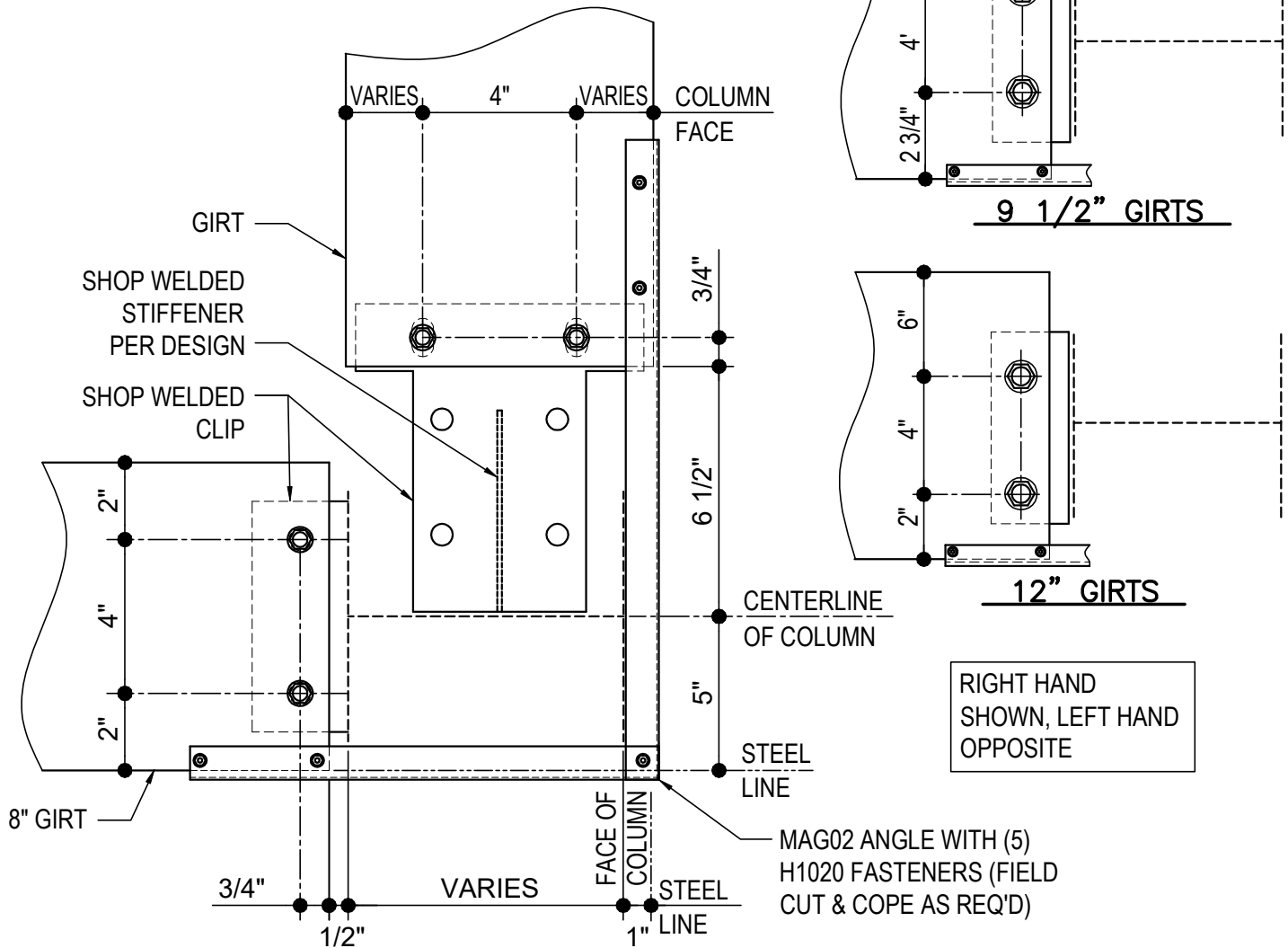
- 1) WELDED CLIPS TO COLUMN: GF102
- 2) ADD STIFFENER PER DESIGN: WS\_04

CE1030 - INSET TO INSET CORNER DETAIL

[Download the DWG file by clicking here.](#)

## ERECTOR NOTE

GIRT CLIPS ARE FACTORY PUNCHED TO BE USED WITH MULTIPLE GIRT DEPTHS. REFER TO THE STANDARD BOLT PLACEMENT DETAIL(S) FOR PROPER BOLT PLACEMENT.



## INSET TO INSET CORNER DETAIL

NOTE: USE (4) 1/2"x 1 1/4" A307 BOLTS H0500/NUTS H0400  
REFERENCE STANDARD WASHER DETAIL FOR TYPICAL WASHER REQUIREMENTS

**CE1030**

### Detailer Notes:

- 1) (2) HOLE WELDED CLIP: GRC09 (AT 8" AND 12" GIRTS), GRC03 (AT 9 1/2" GIRTS)
- 2) WELDED CLIP AT COLUMN WEB: GFI02
- 3) ADD STIFFENER PER DESIGN WS\_04